

LA CADANELLAU

Carole and Daniel welcome you all year long in a contemporary Toulouse style house, in the heart of a landscaped area of 4000m².

The geographical location of Caussade « The Hat City »

is ideal for visiting the main touristic, cultural and gastronomic sites of Tarn-et-Garonne and the Occitanie region.



Single price all year long

« Jonquille » Suite and « Jasmin » Suite

Standard formula, breakfast and local tax included.

Nights number	1 Person	2 People	Additional person
1	90€	100€	43€
2	173€	193€	40€
7	554€	627€	33€

Only accomodation formula, local tax included .

Nights number	1 Person	2 People	Additional person
1	80€	92€	33€
2	153€	168€	30€
7	485€	559€	27€

Other conditions on web sites

LA CADANELLAU

Carole and Daniel

2575 Route de Nègrepelisse
82300 CAUSSADE - FRANCE

Tél. : +33.(0)5.63.63.19.10

Mobile : +33.(0)6.88.50.75.20

Mobile : +33.(0)6.14.83.12.17

email : la-cadanellau@orange.fr

Web sites :

French edition :

www.caussade-chambredhotes-lacadanellau.com

english edition / deutsche Ausgabe

www.chambredhotes-caussade-lacadanellau.com

Access :

From highway A20, exit 59,

1st traffic circle : Towards Caussade.

On 2nd traffic circle, Caussade entrance,
Take the road D64 direction Nègrepelisse.

After 2.6km, turn left on to the path,
Straight on till the main portal .

GPS Datas :

Longitude : 1° 31' 29.3" E

Latitude : 44° 7' 37" N

BED AND BREAKFAST

LA CADANELLAU

CAUSSADE (Tarn-et-Garonne)

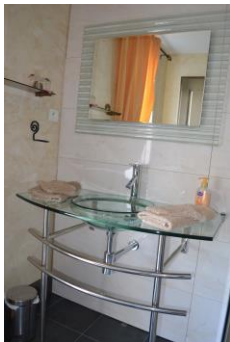


JONQUILLE

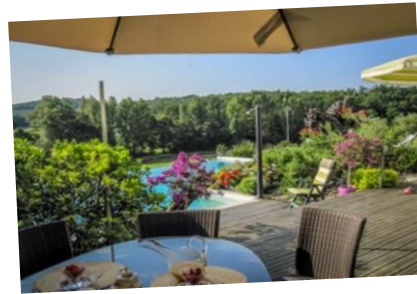
Suite



Suite 31m2, independent entrance,
King size bed 160 – Fitted dressing room,
Lounge corner, Terrace,
Flat screen TV, DVD player, free WI-FI
Private bathroom and toilet.



LA CADANELLAU



JASMIN

Suite



Suite 29m2 and mezzanine
King size bed 160 – Fitted dressing room,
Lounge corner
Flat screen TV, free WI-FI
Privat bathroom and toilet.
Large balcony overlookingpool.